

#PiùSegniPositivi

The landscape: a workspace for social inclusion

Valtellina4CHANGES Conference – Morbegno, may 2016



Progetto promosso da:



Con il contributo di:



Critical emergencies



solidarity



"care" of
landscape



social
cohesion

1\threshold of poverty:

Situational poverty

is caused by a sudden crisis or loss and is often temporary.

2\abandoned land:

Increasing lack of
cultivated land and arable
grass



Critical emergencies



Sondrio area
(Mossini-Ponchiera):
1971 vs 2012



People | situational “poverty”

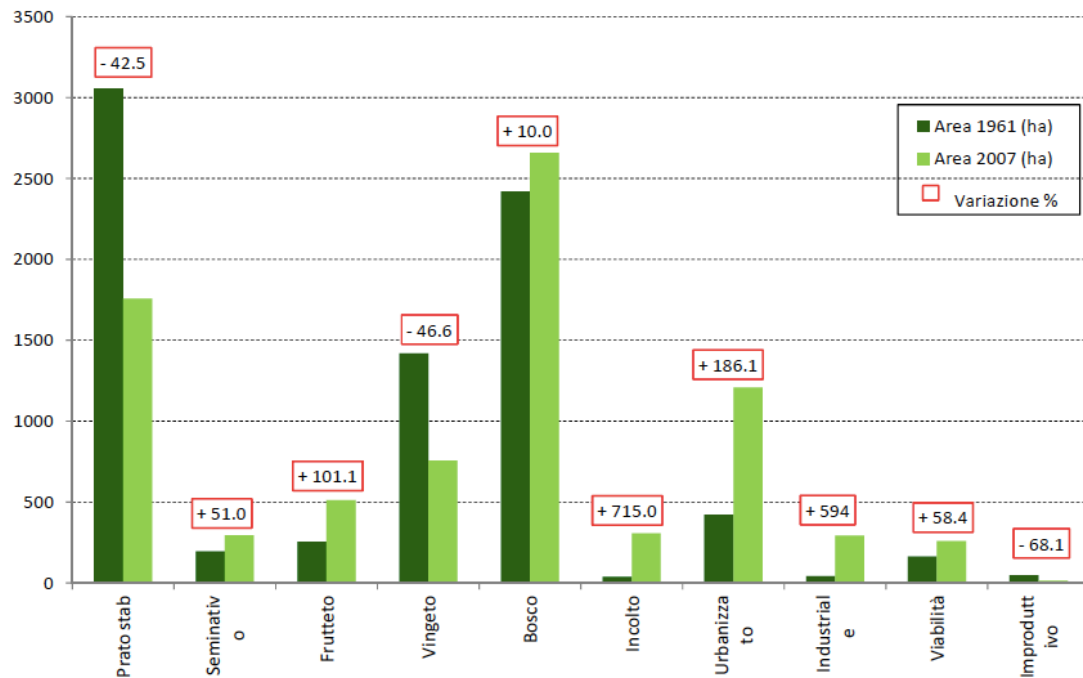
| | MARGINALI | QUASI POVERI | ALTRI |
|-------------------------------|-----------|-----------------|-------|
| IERI (fino al 1995) | 1-2% | 5% | 93% |
| OGGI | 3-5% | 30% | 65% |

- In Italy, the 30% of the population is facing situational poverty in add, 10% is facing poverty that is **also relational**
- The equivalent % of population in state of situational poverty is around **14.000 inhabitants**, in Valtellina



Environment | careless of landscape

VARIAZIONI NELL'AREA FINO A 600 METRI DI QUOTA (ettari)

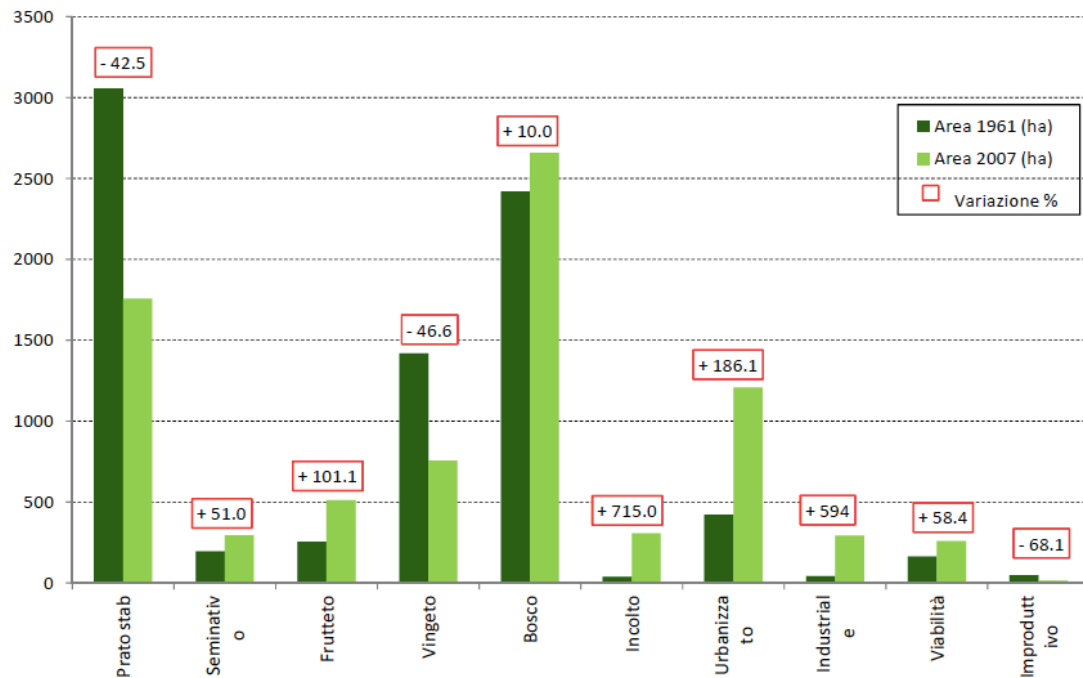


– 40% of our territory is dedicated to arable grass or vineyard



Environment | careless of landscape

VARIAZIONI NELL'AREA FINO A 600 METRI DI QUOTA (ettari)

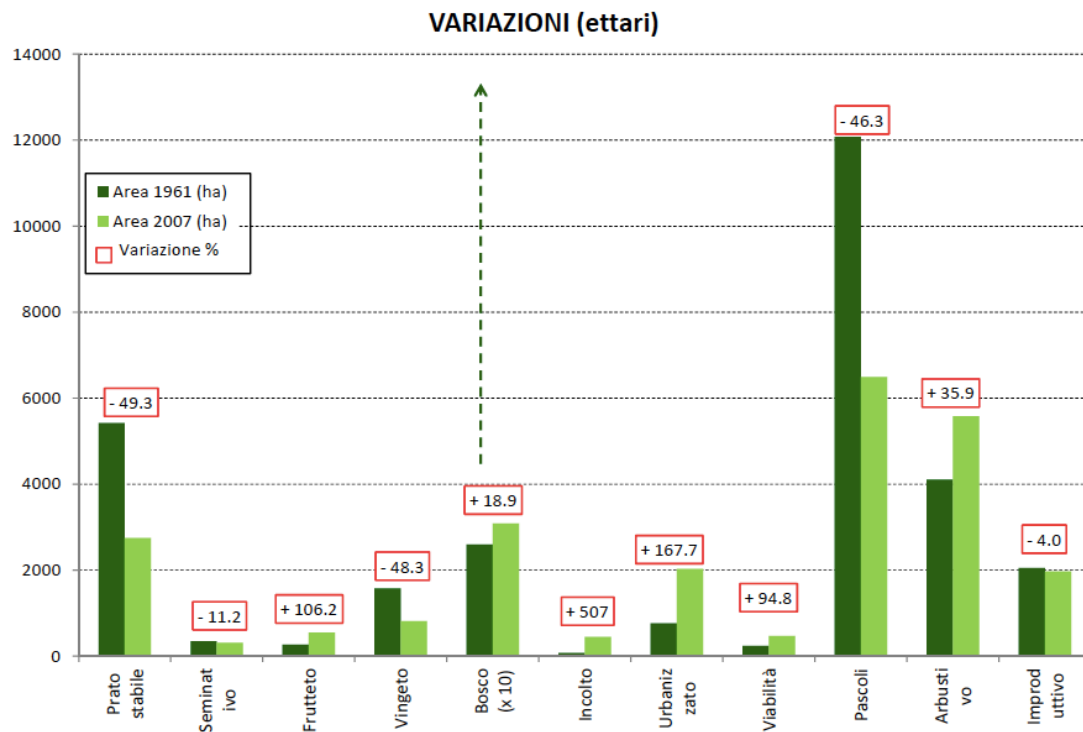


– 40% of our territory is dedicated to arable grass or vineyard

+27% of rural areas are abandoned with related increase of urbanization



Environment | careless of landscape



– 40% of our territory is dedicated to arable grass or vineyard

+27% of rural areas are abandoned with related

+15% of urbanization

– 46% of land for pasture; it is becoming bush, even wilderness



Vision of the project & desirable futures



solidarity



"care" of
landscape



social
cohesion



Main challenges | food access



#Emporion

provides tools for people to be independent in 6 months time

through relational enablers,
extra services to allow the beneficiary overcoming his situation by ricreating a network around him.



#EMPORION 1° YEAR | community market

Σmporion

+++ **Più Segni Positivi** offre occasioni di ripartenza ed un sostegno concreto a chi si trova in una **situazione di temporanea difficoltà economica**.
Emporion è uno dei primi segni positivi tracciati da questo progetto.

Come funziona?

1/ MONETA ALTERNATIVA
Chi accede ad Emporion riceve una **tessera a punti**

2/ FARE LA SPESA
Con questi punti è possibile procurarsi vari **prodotti**

3/ RICOSTRUIRE RETI SOCIALI
Non solo prodotti: Emporion offre **opportunità e servizi**

4/ LOGICA RESTITUTIVA
A sua volta, il beneficiario può diventare **volontario**



Progetto realizzato da:        

61 social market in Italy =
Emporium of Sondrio as
part of a wider national
system

+

availability of “goods”:

- food (primarily)
- services (such as consultants)
- relational

Main challenges | landscape as heritage



solidarity

"care" of
landscape

social
cohesion

#Cantieri

High trails

Sites in Commons

Agricultural sites



#CANTIERI 1° YEAR | high trails



- 11 restored paths for an amount of **50km**
- 7500 km walking (to reach the sites)
- 104 mt of wood beams, used to renew fences
- 35lt of paint material
- 6 new job-positions
- **71000 €** as payment for beneficiaries (seasonal)

#CANTIERI 1° YEAR | high trails



- Municipality of Berbenno:

TERRAZZAMENTI and FOX TRAIL

- 450 mt altitude
- scheduled maintenance: dry stone walls and fence



#CANTIERI 1° YEAR | high trails

- Municipality of Montagna:

*FARINA TRAIL, VERVIO,
CA' MAZZA, MULINO
TRAIL, CA' BONGIASCIA,
MANCAPANE CASTLE*

- >800mt altitude
- scheduled maintenance:
fences, and steps ancient
muletracks, mowing

#CANTIERI 1° YEAR | high trails



Ph – Alfredo Dell'Agosto/Alessandro Valmadre

- Municipality of Chiesa:

GIOVELLO – *RUSCA* TRAIL

- >1000mt altitude
- scheduled maintenance:
cleaning and securing

#CANTIERI 2° YEAR | in Commons



- Community gardens
(Sondrio)
- Recovery and
maintenance of terraces
(Ponte in Valtellina)



Team & professional skills



Target

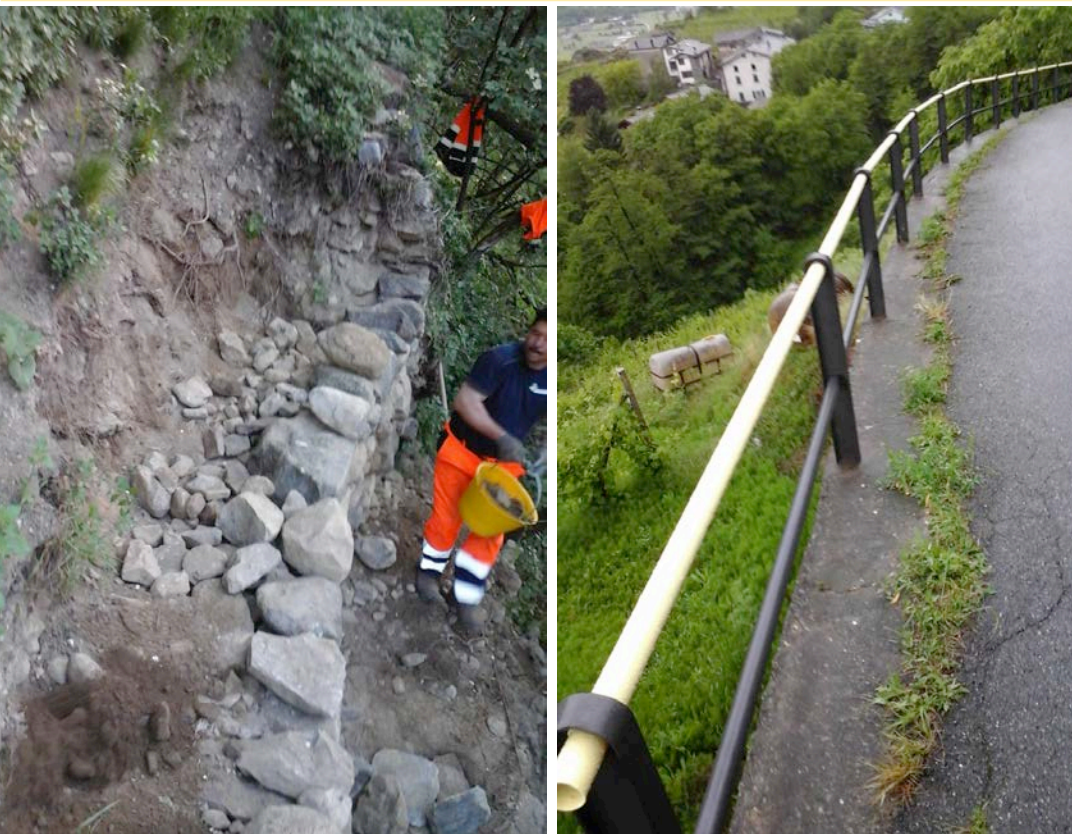
40/60 years old

recently unemployed

“experienced” workers in
building, agriculture and green
sectors



Team & professional skills



MOWING

cutting lawns, cleaning, opening

PRUNING

felling trees, opening gates, reconstruction of barriers and natural steps

DRY-STONE WALLS

walls reconstruction, consolidation, securing



Team & professional skills



MANUAL EARTH-MOVING

handwork, craftly, with minimum use of machinery and transportation by walking

RAW MATERIAL CYCLE

extensive re-use of natural material, on site.



The “happy” end



Thank you!

Massimo Bevilacqua

Project Manager

direzione@piusegnipositivi.org

+

Elena E. Giunta

resp. Comunicazione e FR

sviluppo@piusegnipositivi.org

